

# Smartleaf Russell 2000 Growth Model

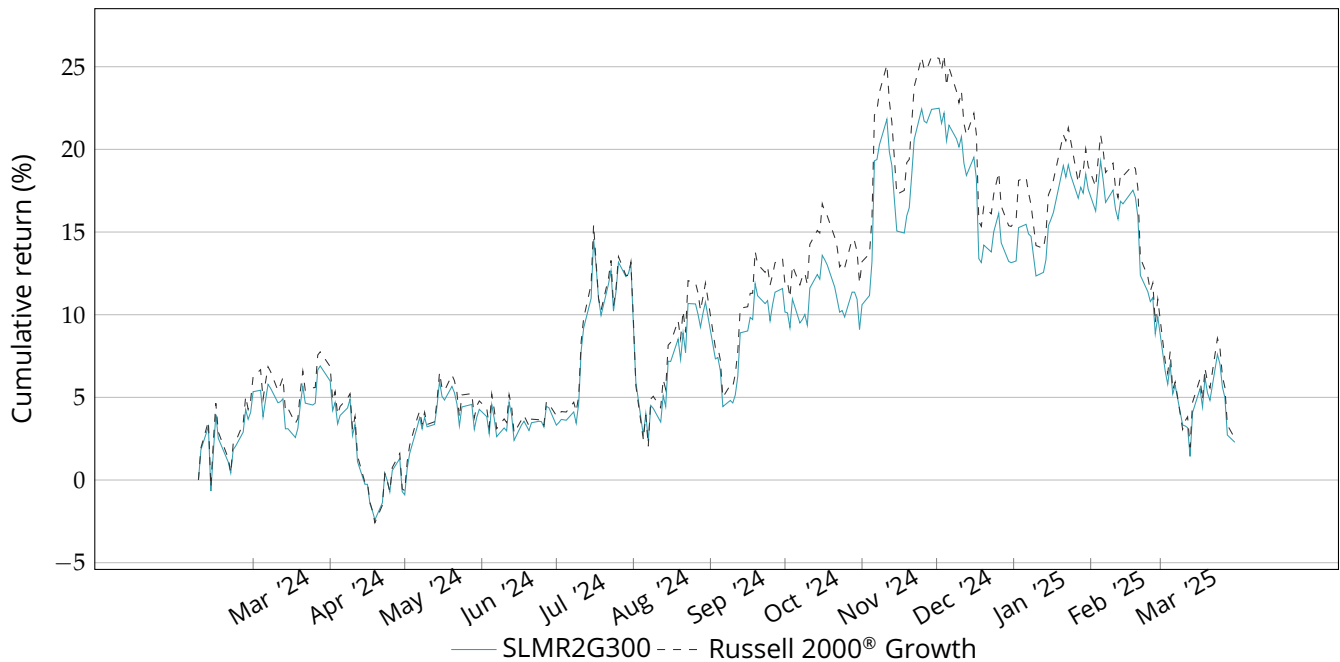
## Tracks Russell 2000® Growth with 300 Stocks

### Smartleaf Russell 2000 Growth Model

The Smartleaf Russell 2000 Growth Model (SLMR2G300) is designed to track the returns of the Russell 2000® Growth with approximately 300 securities. It is constructed using quantitative methods designed to provide a risk-factor exposure that is similar to that of the benchmark.

Benchmark ..... Russell 2000® Growth  
 Holdings ..... Approx. 300 Stocks  
 Model Fee ..... 15 bps / year  
 Recommended Minimum Investment ..... \$100,000

Historical Performance (02/08/2024 – 03/31/2025)



	Q1 2025	Q4 2024	Q3 2024	Q2 2024	Since Inception Annualized
Pre-Tax Model Return (gross of fees)	(9.60)	1.40	6.91	(2.36)	2.00
Pre-Tax Model Return (net of fees)	(9.62)	1.37	6.88	(2.39)	1.90
Pre-Tax Benchmark Return	(11.12)	1.70	8.41	(2.92)	2.21
Excess Pre-Tax Return (gross of fees)	1.52	(0.30)	(1.50)	0.56	(0.20)
Excess Pre-Tax Return (net of fees)	1.49	(0.33)	(1.53)	0.53	(0.30)
Model Yield	0.71	–	–	–	0.71
Benchmark Yield	0.63	–	–	–	0.63
Turnover	4.21	3.38	9.15	21.57	34.60
Ann. Daily Tracking Error	4.09	2.75	3.30	1.73	3.09

\*Table values are provided in percentages. In production date is 01/23/2024. Annualized indicates that these rates reflect the noted return on a yearly basis.

## Definitions

Note: unless otherwise specified, all returns shown are Total Returns, meaning they include reinvestment of distributions, such as interest and dividends.

### Pre-Tax Return for Model and Benchmark

$$R_M = \frac{M_F}{M_I} - 1, R_B = \frac{B_F}{B_I} - 1$$

where  $M_F$  and  $M_I$  are the model's final and initial values, and  $B_F$  and  $B_I$  are the benchmark final and initial values.

### Annualized Pre-Tax Return for Model and Benchmark

$$R_{M_{ann}} = (1 + R_M)^{1/N} - 1, R_{B_{ann}} = (1 + R_B)^{1/N} - 1$$

where  $M_F$  and  $M_I$  are the model's final and initial values, and  $B_F$  and  $B_I$  are the benchmark final and initial values.  $N$  is the number of years in the period.

### Excess Pre-Tax Return

Difference between model return and benchmark return for pre-tax values.

$$\Delta R = R_M - R_B$$

### Annualized Daily Tracking Error

Annualized standard deviation of excess daily logarithmic returns to the benchmark.

$$\sqrt{250} \times SD(R_{model} - R_{benchmark})$$

where  $R_{model}$  and  $R_{benchmark}$  are the series of daily log-returns of the model and the benchmark, respectively.

### Turnover and Annualized Turnover

$$\frac{\text{Total Buys} + \text{Total Sells}}{2} \quad \left| \quad \frac{\text{Total Buys} + \text{Total Sells}}{2 \times N}$$

### Model and Benchmark Yield

The reported yield is the dividends collected from the trailing twelve months as a percentage of the benchmark or model end value, calculated assuming dividends are not reinvested.

$$\frac{\text{Trailing Twelve Months' Dividends}}{\text{End Value Without Dividend Reinvestment}}$$

## Disclosures

SAM is registered with the Securities & Exchange Commission as an Internet investment advisor. The Smartleaf Models, including the model described herein, are available only through an interactive website or, on a limited basis, by special arrangement with SAM.

The performance information regarding the Smartleaf Russell 2000 Growth Model model is based on back-tested data and does not represent the performance of an actual account. The results do not reflect the deduction of advisory or other fees and expenses. The advisory fees of SAM are disclosed in its Brochure (Form ADV-2), which is available upon request. Advisory fees and other expenses will reduce returns, and this reduction will have a cumulative effect over a number of years. As an example of this cumulative effect, an investment of \$1,000,000 with an annual return of 5% and an annual investment advisory fee of 1% of assets under management billed annually in arrears would reduce the investment return by \$10,500 over one year, with a cumulative effect of \$56,815 over 5 years and \$125,772 after 10 years.

SAM models may include firms that are clients of Smartleaf or SAM. However, any such inclusion would be independent of their status as clients. SAM models are algorithmically generated, and the algorithms do not include a firm's status as a Smartleaf or SAM client as a factor, positively or negatively. PAST PERFORMANCE IS NOT AN INDICATION OF FUTURE RESULTS.

SECURITIES INDEX: This presentation includes data related to the performance of the Russell 2000® Growth Index. Neither the Russell 2000® Growth Index nor the back-tested model data reflect the reinvestment of cash dividends, but do reflect the reinvestment of other distributions. The performance of securities indices is not subject to fees and expenses associated with investment funds. Investments cannot be made directly in the indices.

Russell 2000® Growth is a registered trademark of FTSE Russell®, a division of London Stock Exchange Group plc. FTSE Russell® is the owner of all trademarks, service marks and copyrights related to its indices. The Smartleaf Overlay Portfolio Management System is a licensed product of Smartleaf, Inc., an affiliate of SAM.